

ATTACHMENT B – RESIDENTIAL OPTIMIZE YOUR CHARGE LOAD PROFILES

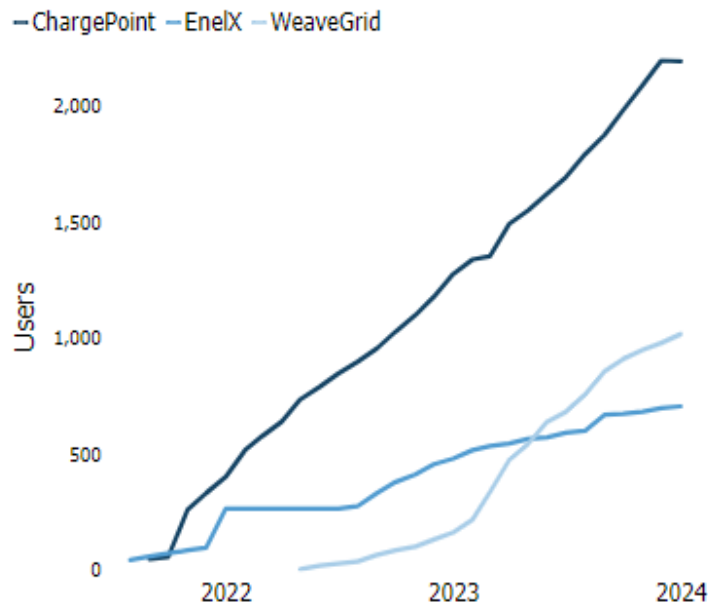
This dashboard analyzes charging load from OYC participants across three vendors: ChargePoint, EnelX, and WeaveGrid.

Participation counts may differ from the statistics in the EVAAH/OYC Participants Dashboard because not all participant records could be directly matched with charging data records.

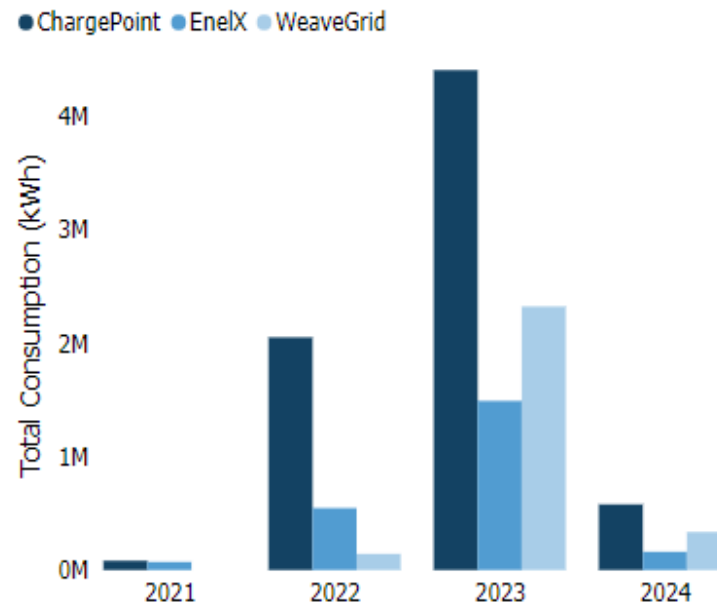
Summary Statistics

Source	Count of Distinct EVs/Chargers	Start Date	End Date	Total Consumption (kWh)	Avg. of Daily Consumption / Vehicle	StdDev. of Daily Consumption / Vehicle	Avg of Hourly Consumption / Vehicle	Max of Hourly Consumption
ChargePoint	2,264	9/29/2021	1/30/2024	7,123,001	7.74	12.76	0.32	3,582.31
EnelX	714	8/1/2021	1/31/2024	2,269,505	6.39	11.45	0.27	1,287.13
WeaveGrid	1,172	5/18/2022	1/31/2024	2,801,381	11.03	17.34	0.46	1,664.24

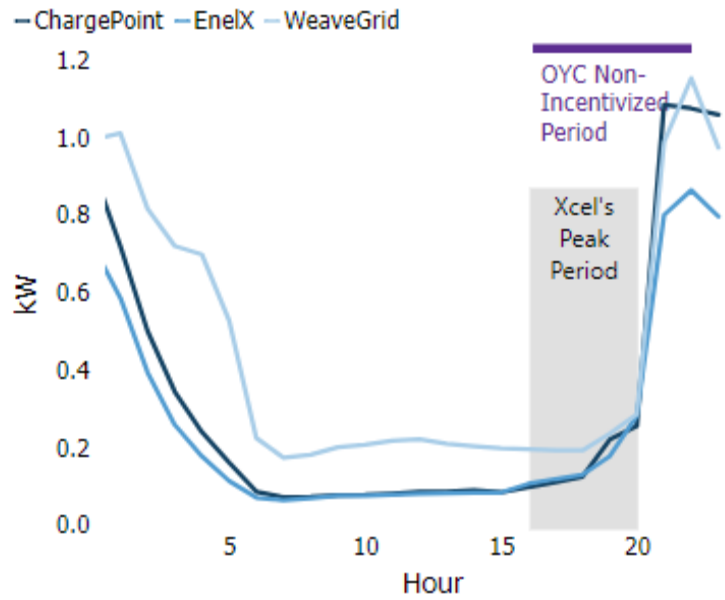
Count of Distinct EVs/Chargers Over Time



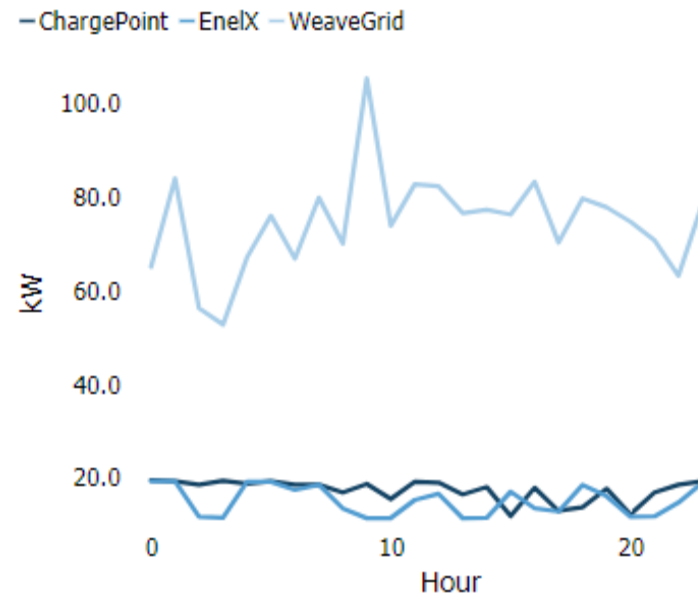
Total Consumption Over Time



Average Demand Per Hour



Maximum Demand Per Hour



*WeaveGrid counts are reported at the vehicle level, while Enel X and ChargePoint counts are reported at the charger level.